

# HITACHI

# Mini-Excavators

## EX17U

**Rated Engine HP**  
12.3 hp (9.2 kW)

**Operating Weight**  
EX17U: 3,810 lbs  
(1 725 kg)

**Bucket Capacity**  
0.058 yd<sup>3</sup>  
(0.045 m<sup>3</sup>)





# The EX17U Is 100% Fast, Smooth, Tough

Model	Operating Weight	Travel Speeds	Max Digging Reach	Gradeability	Max Bucket Breakout Force
EX17U	3,810 lbs (1 725 kg)	0 - 2.6 mph (0 - 4.2 km/h)	12' 9.5" ft (3 900 mm)	30° (58%)	3,329 lbf (1 510 kgf)



Ultra-compact yet powerful, Hitachi's EX17U will prove itself over and over on your jobsites as a productive money-maker.

Get in close to pavements and walls for parallel digging without straddling, thanks to the standard swing boom.

Use the already-plumbed hydraulic attachment package for a hammer or other powered attachment.

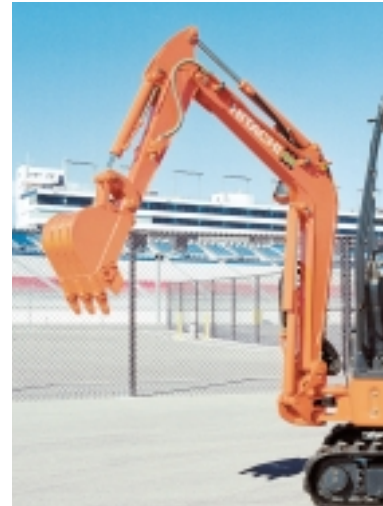
Load it up and trailer it around like it was a skid steer—put it to work and let it make you money.

The EX17U is one tough excavator.



# The Hitachi EX17U Is Clearly Not A “Toy”

Hitachi excavators have one of the highest owner satisfaction ratings of all makes, especially when it comes to smooth, multi-function control, dependable production, and low operating cost. You'll find that the EX17U is no exception. It has been engineered and built with the same high standards of quality control and field ruggedness you've come to expect from Hitachi.



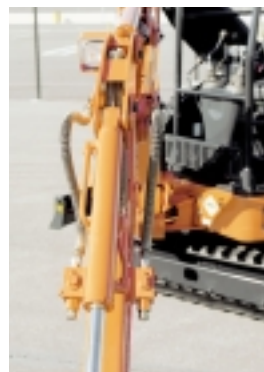
Similar boom/stick design as in bigger models for extreme applications. Bucket cylinder hose is housed inside arm for protection. The hydraulic attachment package is standard.

Plumbed for hydraulic attachment.

The boom cylinder and arm cylinder are cushioned at stroke ends to absorb shocks. (Boom cylinder: cushioned only at boom end.) An anti-drift valve reduces front attachment drift. HN bushings are used on all front attachment and blade joints.

The carbody is extremely tough. It comes with a side step for easy access and an easily detachable machine cover. The body's "ultra short radius" rear-end will always remain within the undercarriage width.

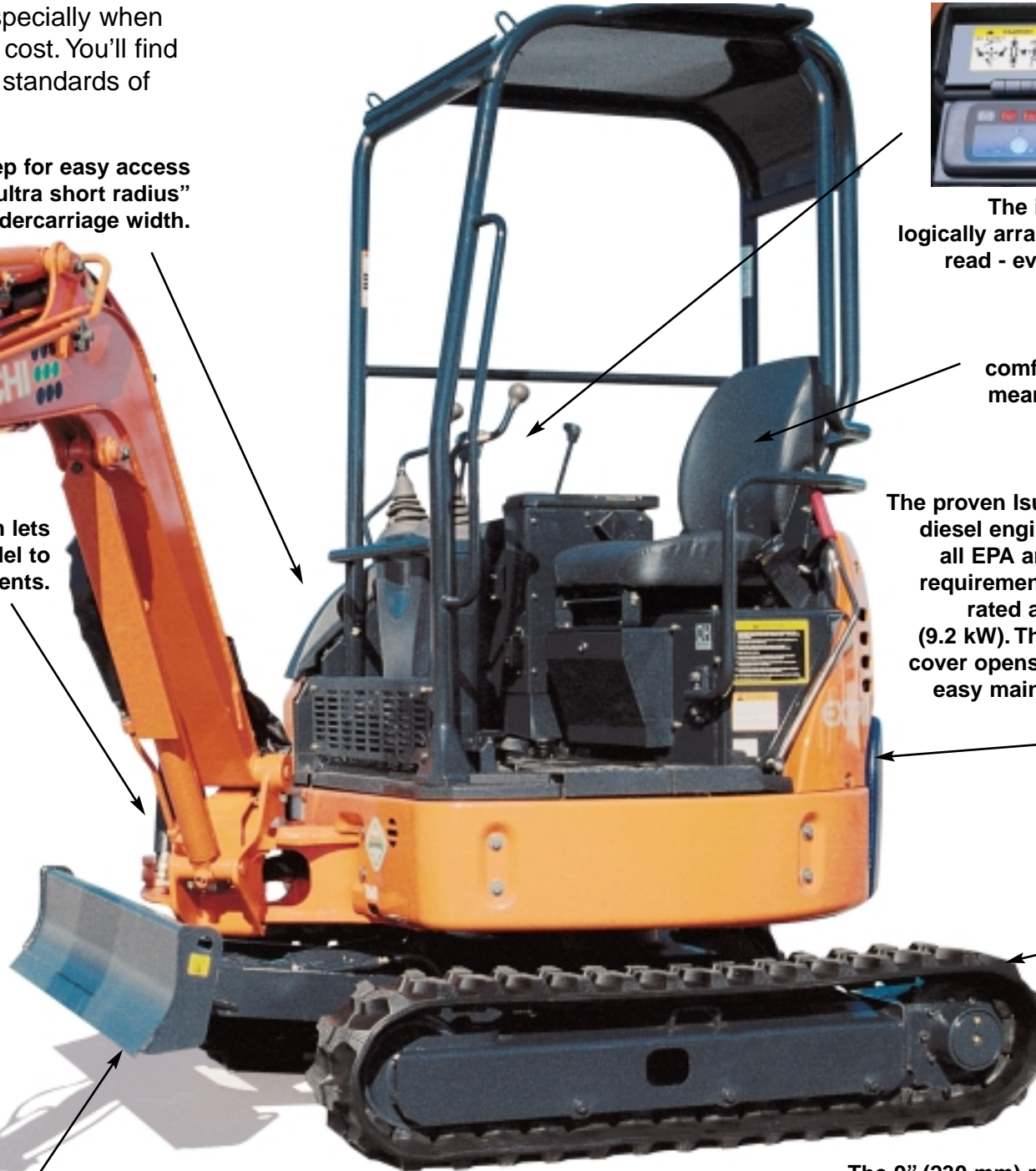
Swinging boom lets you dig parallel to walls, pavements.



The piping and connectors are rugged. Split-type front hoses allow for simple replacement.



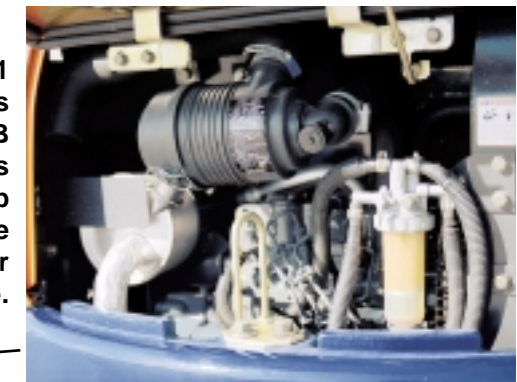
The 4' 3" (1 300 mm) long dozer blade needs no lubrication and is standard.



The instrument bay is logically arranged and easy to read - even in bright light.



The functional and comfortable work station means high productivity.



The proven Isuzu 3YB1 diesel engine meets all EPA and CARB requirements and is rated at 12.3 hp (9.2 kW). The engine cover opens wide for easy maintenance.

Choose high speed for quick job-to-job travel and low speed for powerful, stable travel and blade operation.



The 9" (230 mm) rubber track is standard. A steel track is optional.

Although the EX17U is small in size, it is big on features, such as an extra hydraulic valve, a proven boom/stick design, and a rugged dozer blade. The cab is comfortable and ergonomically designed. The Isuzu 3YB1 engine starts up easily and is a high performer. Three pumps are used for smooth multi-function travel/swing/boom lift. And an ultra short radius means you can get in close to concentrate on the job, not any obstructions.



# Specifications: EX17U

## Standard Features

- Dozer blade
- Control valve for extra hydraulic port
- Hydraulic plumbing for attachments
- Operator control switch for hydraulic attachment

## Options

- Steel track

## Service Features

- Swing gear grease-bathed for extended maintenance intervals of up to 500 hours
- Swing reduction gear lubricated with hydraulic oil. No gear oil change necessary
- Hydraulic oil change interval at 4000 hours (with Hitachi Super EX 46HN Oil)
- Aluminum-finned radiator and oil cooler for high resistance to corrosion
- Green chromate-treated bolts for high resistance to corrosion
- Water separator to prevent water entry into fuel line
- Bucket cylinder hose housed inside arm
- Wet-type multi-plate swing parking brake, interlocked with the lock lever, provided for transportation
- Easily detachable machine cover
- Engine cover opens wide for easy maintenance



Engine cover opens wide for easy maintenance

## Specifications

Operating weight:  
4-pillar canopy.....3,810 lb (1 725 kg)

Standard bucket:  
Capacity .....0.58 yd<sup>3</sup> (.045 m<sup>3</sup>)  
Width .....17.7 in (450 mm)

Standard arm length:.....3' (.93 m)  
Standard rubber shoe width: ...9" (230 mm)

**Engine**  
Model: .....Isuzu 3YB1, Diesel  
Rated power: .....12.3 hp (9.2 kW)  
.....@ 2,300 rpm (min<sup>-1</sup>)  
No. of cylinders: .....3  
Displacement: .....46.4 - 58.2 in<sup>3</sup> (.76 - .95 L)  
Fuel tank capacity: .....5.3 US gal (20 L)

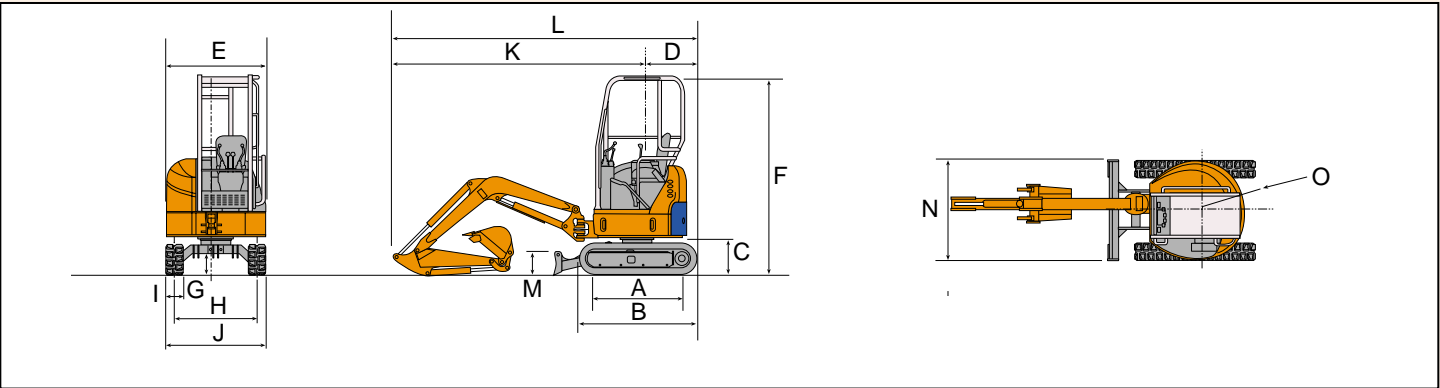
**Hydraulic System**  
Max. flow rate: .....4.0 - 4.2 x 2 US gpm  
.....(15 - 16 x 2 L/min)  
Aux. line max. flow rate: .....6.9 - 8.5 US gpm (26 - 32 L/min)  
Hydraulic tank capacity: .....6.6 US gal (25 L)  
System capacity: .....7.9 US gal (30 L)

**Performance**  
Max. bucket breakout force: ....3,329 lbf (1 510 kgf)  
Max. arm digging force: .....2,194 lbf (995 kgf)  
Max. swing speed: .....8.5 rpm (min<sup>-1</sup>)  
Max. travel speed: .....2.6/1.3 mph (4.2/2.1 km/h)  
Gradeability: .....30° (58%)  
Ground pressure: .....4.06 psi  
.....(0.29 kgf/cm<sup>2</sup>, 28 kPa)

Rated lifting capacity, over side  
Max. height/radius .....6.6/6.6 ft (2/2 m)  
.....728 lb (330 kg)  
Height/max. radius .....3.3/9.8 ft (1/3 m)  
.....441 lb (200 kg)

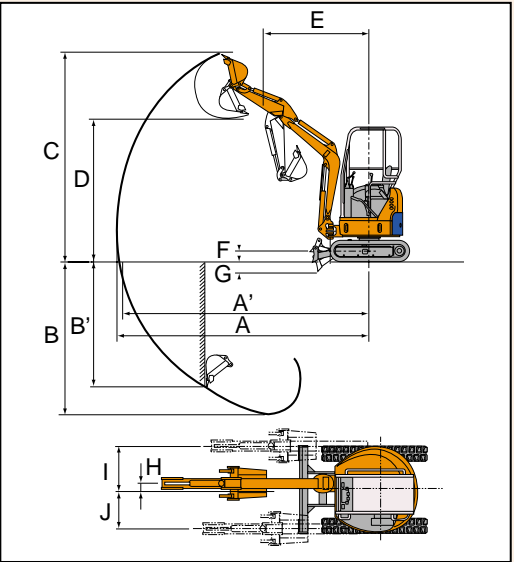
## EX17U

## Dimensions



A	Distance between tumblers	3' 11.8"	(1 215 mm)
B	Undercarriage length	5' 2"	(1 570 mm)
C	Counterweight clearance	1' 6"	(455 mm)
D	Rear-end length	2' 3"	(675 mm)
E	Overall width of superstructure	4' 3"	(1 300 mm)
F	Overall height of 4-pillar canopy	7' 10"	(2 390 mm)
G	Min. ground clearance	9.4"	(240 mm)
H	Track gauge	3' 6"	(1 070 mm)
I	Track shoe width	9"	(230 mm)
J	Undercarriage width	4' 3"	(1 300 mm)
K	Front-end length	9' 5"	(2 875 mm)
L	Overall length	11' 8"	(3 550 mm)
M	Blade height	9.8"	(250 mm)
N	Blade width	4' 3"	(1 300 mm)
O	Rear-end swing radius	2' 1.6"	(650 mm)

## Working Ranges



A	Max. digging reach	12' 9.5"	(3 900 mm)
A'	Max. digging reach on ground	12' 5.6"	(3 800 mm)
B	Max. digging depth	7'	(2 150 mm)
B'	Max. vertical digging depth	5' 9"	(1 750 mm)
C	Max. cutting height: 4-pillar canopy	11'	(3 350 mm)
D	Max. dumping height: 4-pillar canopy	7' 10.5"	(2 400 mm)
E	Min. swing radius: 4-pillar canopy	5' 9"	(1 750 mm)
F	Max. blade raising height above ground level	7.5"	(190 mm)
G	Max. blade lowering depth below ground level	8.7"	(220 mm)
H	Offset distance	2.3"	(60 mm)
I	Max. right offset: 4-pillar canopy	2' 1.6"	(650 mm)
J	Max. left offset: 4-pillar canopy	1' 11.6"	(600 mm)
Boom swing angle (left/right)		70/50°	70/50°

Standard equipment may vary by country, so please consult your Hitachi dealer for details.

These specifications are subject to change without notice.

# HITACHI

The *Best* You Can Buy

- 
- Manufacturing Plant
  - Sales Office
  - Parts/Distribution Facility
  - Dealership Facilities

## Hitachi of North America

■ Hitachi excavators, mini excavators, mining shovels, cranes and forestry machines are the best you can buy. Our commitment to superior product support is equally outstanding.

- 37 Dealers
- 194 Dealer Facilities
- Parts Warehouses
  - Houston, Texas
  - Vancouver, B.C.

- Manufacturing Plants
  - Tsuchiura, Japan
  - Tierra, Japan
  - Kernersville, North Carolina
  - Langley, BC
  - Saltillo, Mexico