

**HITACHI**  
**IN THE WOODS**

**Forester**®



**EX330 / EX370 MODELS**



# Introducing The Forester-Hitachi's Purpose-Built EX330/370 Models

Now, you can buy Hitachi quality from undercarriage to attachment, assembled from the ground up at our new, North American manufacturing facility.

With the introduction of purpose-built Forester models from Hitachi, you can be assured of 100% Hitachi manufacturing quality, an excellent Hitachi factory warranty covering all machine parts, and Hitachi product support—including comprehensive parts inventories and factory service training.

The Hitachi purpose-built models for logging operations are built in a state-of-the-art manufacturing facility located in the heart of the Pacific logging industry. The plant features computer-controlled steel cutting, robotic welding, and comprehensive assembly programs for highly consistent manufacturing efforts that result in top quality machines ready to go to work.

For over 20 years, Hitachi has been actively involved in the logging industry, and we have built a solid reputation for

supplying base machines renowned for smooth hydraulic controls, long-lasting engines and superior components.

Hitachi base machines have been the brand of choice for many sort yards, hoe-chucking (shovel logging) applications, and logging contractors.

We invite you to learn more about the new purpose-built Hitachi Forester models: The first 100% Hitachi logging machines.

## Forester Features:\*

- 1** The same, proven engines and hydraulic system found in all Hitachi excavators.
- 2** Hitachi's exclusive multi-function hydraulic-sensing controls for optimal hydraulic attachment operation and smooth, aggressive swings on grade.
- 3** Choice of 4 undercarriages: Standard excavator, and 3 High & Wide styles/widths, with 28" (700 mm) or 31" (800 mm) shoes.
- 4** Forestry guarding with available heavy-duty access doors, 10 in. (254 mm) wide catwalk, forestry engine cover, hydraulic and fuel protection panel, and log deflector for right front corner protection.
- 5** Multiple counterweight options for varying weights and extended-use with fuel in the counterweight.
- 6** Aggressive cylinder guards for added protection.
- 7** Cabs with polycarbonate front windows and interior bars which provide improved visibility and reduced maintenance.
- 8** OSHA and BC/WCB approved side or rear-entry cabs.
- 9** Larger-than-standard purpose-built cabs with increased window area, higher-capacity heating and cooling (HVAC) capacity and improved air distribution with 8 outlets for maximum operator comfort.
- 10** Five cab riser options.

\* All features are not standard



**Forester**®





 **Forester**  **er** 



# Features for Peak Performance

## Cab/Operator Compartment

### Cabs for High Production

Hitachi purpose-built cabs are comfortable, easy to maintain, and extremely heavy-duty in order to meet all governmental regulations and to withstand tough forestry conditions.



*Rear Entry Cab provides safer access and larger, more comfortable work station than conventional cab*

### Safety First

- Meets all WCB and OSHA requirements for forestry applications
- OSHA spec cab has polycarbonate windows on all sides with protection bars on the inside for easier cleaning
- WCB spec cab features glass with protective external cage
- FOPS and FOGS Protections with no external guarding required
- Floor windows on rear entry cabs provide visibility to the tracks
- Rear and side entry cabs available

### Comfort

- Hitachi's fully adjustable suspension seat includes comfort features such as lumbar support, arm rests, adjustable hand controls
- Extra capacity cooling/heating air conditioning system with 8 vents
- Hitachi controls and gauges easy to read and laid out in a logical manner

*Side Entry Cab is more compact, therefore more appropriate for certain applications*



*Rear Entry Cab with WCB-approved window guarding (left window guards optional)*



## Fronts

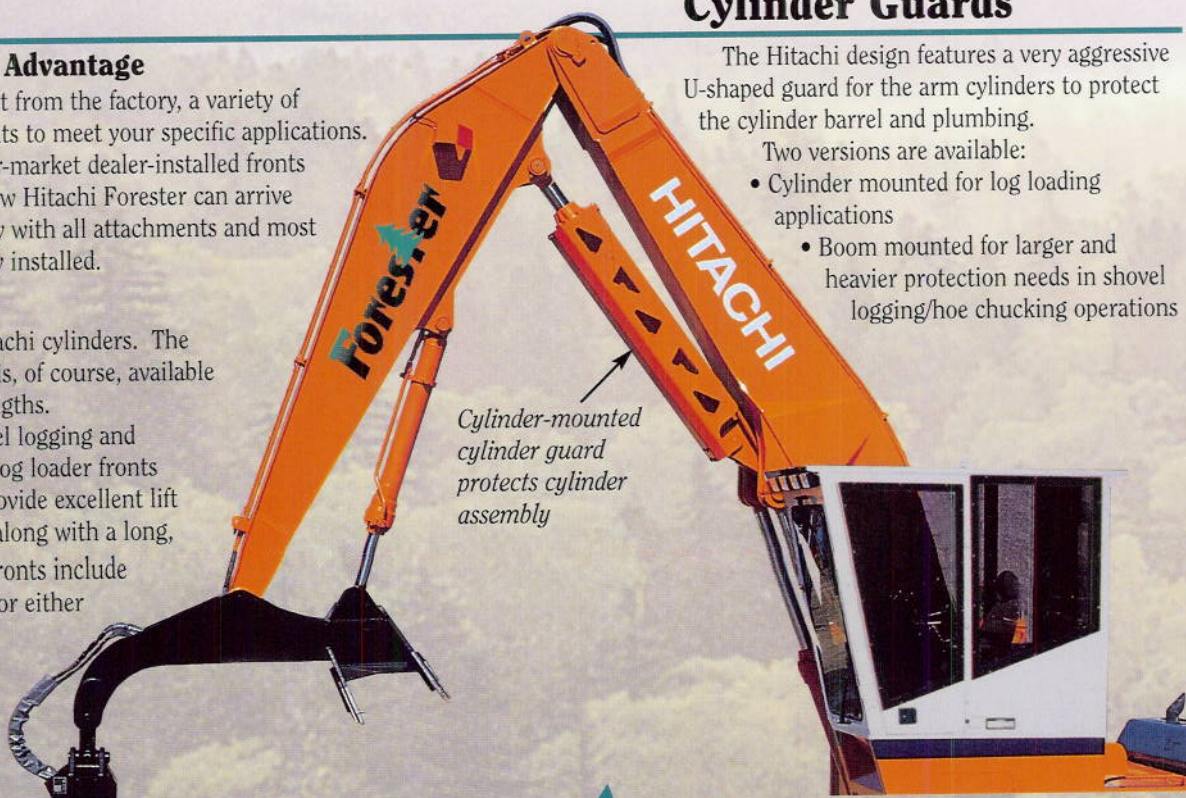
### The Factory-direct Advantage

You can receive, direct from the factory, a variety of standard and custom fronts to meet your specific applications. Instead of relying on after-market dealer-installed fronts and attachments, your new Hitachi Forester can arrive complete from the factory with all attachments and most (if not all) options already installed.

### Hitachi Quality

All fronts feature Hitachi cylinders. The standard excavator front is, of course, available with arms of different lengths.

Purpose-built live heel logging and butt-n-top/clam grapple log loader fronts have been designed to provide excellent lift and reach specifications along with a long, trouble-free life. These fronts include hydraulics and controls for either a 2-function grapple or valve-in-head controls. The package also includes an auxiliary counterweight.



## Cylinder Guards

The Hitachi design features a very aggressive U-shaped guard for the arm cylinders to protect the cylinder barrel and plumbing.

Two versions are available:

- Cylinder mounted for log loading applications
- Boom mounted for larger and heavier protection needs in shovel logging/hoe chucking operations

# Forester®

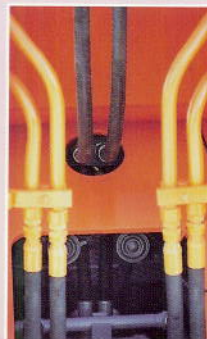




*Above: Optional rear entry cab/riser with standard hydraulic tilt features safety interlocks, hydraulic raise/tilt powered by electronic pump*



*Left: Tilting cab is electronically controlled*



*Right: Hydraulic lines run through the guarding instead of under*



*Standard 10-inch (254 mm) wide catwalks are mounted for optimum machine access and protection along both sides*

## Stronger Upperstructure

All Forester designs incorporate box sections and inverted U-channels for increased rigidity.

The boom tower and main sections are constructed of solid plate steel while the boom foot and engine mount areas are reinforced for optimal durability.

The Hitachi D-shaped frame is extended to provide a standard 10-inch (254 mm) wide catwalk along both sides. The walkway features a noticeable lip at the edge and a non-skid surface for safety.

## Factory-Built Undercarriage



*High and Wide undercarriage is designed to handle tough forestry terrain*

Hitachi Forester wider-gauge undercarriages are not based on re-worked excavator car bodies, nor are they one-of-a-kind customizations. They are 100% purpose-built for the logging industry, providing greater stability and ground clearance.



*Left: Double pedestal, heavy-duty top rollers standard with high-wide undercarriage*

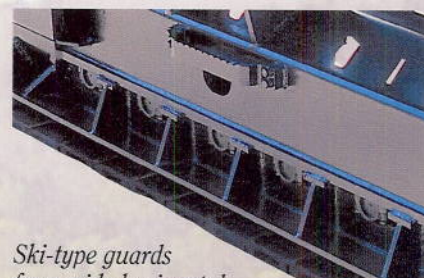
### Built Specifically for the Woods

Each Hitachi Forester undercarriage is designed specifically for the upperstructure weight and stresses required for logging applications.

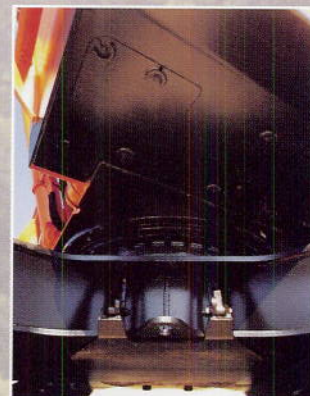
The Hitachi High and Wide design incorporates undercarriage features geared to minimize track wear:

- Track guides added above idlers
- Bottom track rollers replace excavator-type top rollers
- Ski-type full length track guards with wide horizontal wear surface are available to minimize chain twisting resulting in extended track chain life (optional)

The High and Wide undercarriages are available with 28-inch (700 mm) or 31-inch (800 mm) shoes. The track frames are reinforced in the idler areas. Travel motor guards and swivel guards are designed for extreme duty. Both the High and Wide undercarriage and the extreme duty full plate belly pan are optional.



*Ski-type guards for a wide horizontal wear surface that minimizes track chain twisting and results in extended track chain life*



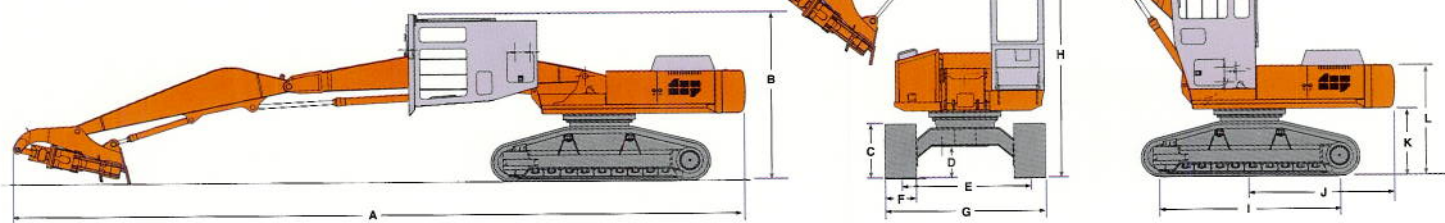
*Right: Extreme duty guard covers the entire x-frame and center joint (optional)*

# Forester®



# EX330

## Specifications Summary:



### Dimensions

A. Overall length	54' 3"
	(16 535 mm)
B. Traveling height	12' 6"
	(3 810 mm)
C. Track height	3' 10"
	(1 168 mm)
D. Min. ground clearance	2' 5"
	(737 mm)
E. Track gauge	9' 7"
	(2 921 mm)
F. Track shoe width	2' 4"
	(711 mm)
G. Undercarriage width	11' 11"
	(3 632 mm)
H. Overall height	16' 6"
	(5 029 mm)
I. Distance between tumblers	13' 3"
	(4 039 mm)
J. Rear-end length	11' 4"
	(3 454 mm)
K. Counterweight clearance	4' 10"
	(1 473 mm)
L. Counterweight height	8' 4"
	(2 540 mm)

### Engine

Model:	Isuzu B-6SD1T
Power:	228 hp (170 kW) @ 1900 rpm (min-1)
Displacement:	598 in <sup>3</sup> (9.8 L)
Aspiration:	Turbocharged

Fuel Capacity:	148 U.S. gal (560 L)
Fuel/Water Separator	

### Hydraulic System

Main Pumps:	2 variable displacement axial piston pumps
Flow:	2 x 68.7 US gpm (260 L/pm)

### System Pressures:

Implement:	4,550 psi (319.91 kgf/cm <sup>2</sup> )
Swing:	4,125 psi (290.03 kgf/cm <sup>2</sup> )
Travel:	4,980 psi (350.14 kgf/cm <sup>2</sup> )

### Cylinders

Boom:	6.69" (170 mm) bore 4.53" (115 mm) rod
Arm:	7.48" (190 mm) bore 5.12" (130 mm) rod
Heel:	5.71" (145 mm) bore 3.74" (95 mm) rod

### Electrical

24-volt system
8 halogen work lights

### Undercarriage

Tractive Effort:	54,674 lbf (24 800 kgf)
Speed:	0 - 3.4 mph (5.47 km/h)

### Front End

Max. Reach:	43'	(13.11 m)
Below Grade:	17'	(5.18 m)
Boom:	21'	(6.40 m)
Arm:	16'	(4.88 m)
Heel:	4'	(1.22 m)

### Weight

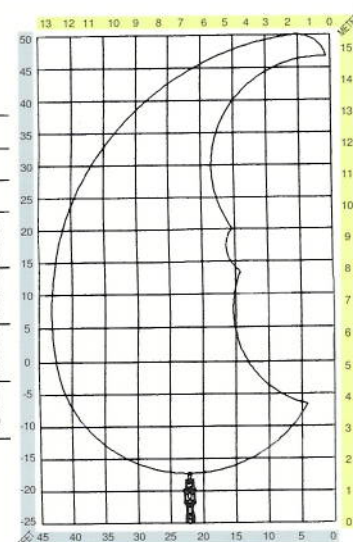
Forestry cab, side entry with 48" (1.22 m) riser:	92,490 lb (41 953 kg)
Rear entry cab with 48" (1.22 m) riser:	94,555 lb (42 890 kg)

Weights do not include grapple

## Work Range and Capacity

VERTICAL	HORIZONTAL							
	20' (6.1 m)		25' (7.6 m)		30' (9.1 m)		35' (10.7 m)	
	FS	SS	FS	SS	FS	SS	FS	SS
30' (9.1 m)	*28.2 (*12.8) <b>*32.4 (*14.7)</b>	*28.2 (*12.8) <b>*32.4 (*14.7)</b>	*25.9 (*11.7) <b>*29.8 (*13.5)</b>	21.7 (9.8) <b>28.9 (13.1)</b>	21.0 (9.5) <b>*27.3 (*12.4)</b>	15.4 (7.0) <b>20.5 (9.3)</b>	16.8 (7.6) <b>*20.3 (*9.2)</b>	12.3 (5.6) <b>16.5 (7.5)</b>
20' (6.1 m)	*29.2 (*13.2) <b>*33.6 (*15.2)</b>	*29.2 (*13.2) <b>*33.6 (*15.2)</b>	*27.5 (*12.5) <b>*31.6 (*14.3)</b>	21.5 (9.8) <b>28.7 (13.0)</b>	21.3 (9.7) <b>*27.7 (*12.6)</b>	15.7 (7.1) <b>20.9 (9.5)</b>	16.2 (7.3) <b>21.5 (9.8)</b>	11.7 (5.3) <b>15.6 (7.1)</b>
10' (3.0 m)	*35.8 (*16.2) <b>*41.2 (*18.7)</b>	28.6 (13.0) <b>*41.2 (*18.7)</b>	27.6 (12.5) <b>*35.4 (*16.1)</b>	20.1 (9.1) <b>26.8 (12.2)</b>	20.5 (9.3) <b>27.4 (12.4)</b>	15.0 (6.8) <b>19.9 (9.0)</b>	16.3 (7.4) <b>21.8 (9.9)</b>	11.9 (5.4) <b>15.8 (7.2)</b>
0'	37.2 (16.9) <b>*46.6 (*21.1)</b>	26.2 (11.9) <b>34.9 (15.8)</b>	26.3 (11.9) <b>35.1 (15.9)</b>	18.9 (8.6) <b>25.2 (11.4)</b>	20.0 (9.1) <b>26.6 (12.1)</b>	14.4 (6.5) <b>19.2 (8.8)</b>	15.7 (7.1) <b>21.0 (9.5)</b>	11.3 (5.1) <b>15.1 (7.3)</b>

- Notes:
1. Ratings are based on SAE J2417
  2. Capacity ratings do not exceed 75% of tipping load with the machine on firm, level ground or 87% of hydraulic capacity
  3. Ratings are in 1000's of lbs. (kg) and do not include grapple
  4. '\*' indicates loads limited by hydraulic capacity
  5. Ratings in **Bold** indicate corresponding 100% values.

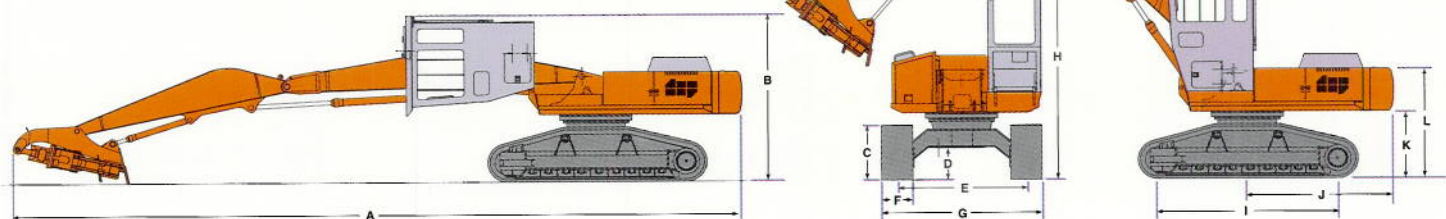


# Forester®



# EX370

## Specifications Summary:



### Dimensions

A. Overall length	54' 3"
	(16 535 mm)
B. Traveling height	12' 7"
	(3 835 mm)
C. Track height	4' 0"
	(1 219 mm)
D. Min. ground clearance	2' 5"
	(737 mm)
E. Track gauge	10' 2"
	(3 099 mm)
F. Track shoe width	2' 4"
	(711 mm)
G. Undercarriage width	11' 11"
	(3 632 mm)
H. Overall height	16' 6"
	(5 029 mm)
I. Distance between tumblers	13' 3"
	(4 039 mm)
J. Rear-end length	11' 4"
	(3 454 mm)
K. Counterweight clearance	4' 11"
	(1 499 mm)
L. Counterweight height	8' 5"
	(2 565 mm)

### Engine

Model:	Isuzu B-6SD1T
Power:	228 hp (170 kW) @ 1900 rpm (min-1)
Displacement:	598 in <sup>3</sup> (9.8 L)
Aspiration:	Turbocharged

Fuel Capacity:	148 U.S. gal (560 L)
Fuel/Water Separator	

### Hydraulic System

Main Pumps:	2 variable displacement axial piston pumps
Flow:	2 x 68.7 US gpm (260 L/pm)
System Pressures:	
Implement:	4,550 psi (319.91 kgf/cm <sup>2</sup> )
Swing:	4,125 psi (290.03 kgf/cm <sup>2</sup> )
Travel:	4,980 psi (350.14 kgf/cm <sup>2</sup> )

### Cylinders

Boom:	6.69" (170 mm) bore 4.53" (115 mm) rod
Arm:	7.48" (190 mm) bore 5.12" (130 mm) rod
Heel:	5.71" (145 mm) bore 3.74" (95 mm) rod

### Electrical

24-volt system
8 halogen work lights

### Undercarriage

Tractive Effort:	63,272 lbf (28 700 kgf)
Speed:	0 - 3.0 mph (4.9 km/h)

### Front End

Max. Reach:	43'	(13.11 m)
Below Grade:	17'	(5.18 m)
Boom:	21'	(6.40 m)
Arm:	16'	(4.88 m)
Heel:	4'	(1.22 m)

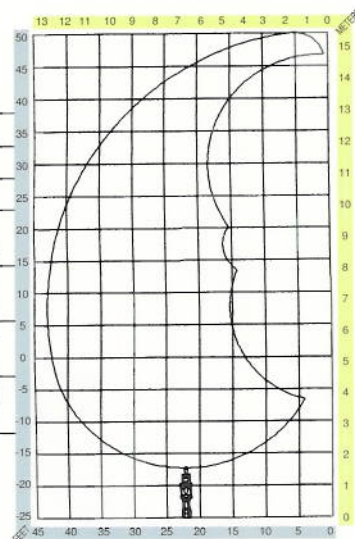
### Weight

Forestry cab, side entry with 48" (1.22 m) riser:	96,745 lb (43 884 kg)
Rear entry cab with 48" (1.22 m) riser:	98,815 lb (44 822 kg)
Weights do not include grapple	

## Work Range and Capacity

VERTICAL	HORIZONTAL							
	20' (6.1 m)		25' (7.6 m)		30' (9.1 m)		35' (10.7 m)	
	FS	SS	FS	SS	FS	SS	FS	SS
30' (9.1 m)	*28.8 (*12.8) <b>*32.5 (*14.7)</b>	*28.2 (*12.8) <b>*32.5 (*14.7)</b>	*25.8 (*11.7) <b>*29.6 (*13.4)</b>	22.6 (10.3) <b>29.6 (13.4)</b>	21.9 (9.9) <b>*27.2 (*12.3)</b>	16.0 (7.3) <b>21.4 (9.7)</b>	17.0 (8.0) <b>*20.3 (*9.2)</b>	12.9 (5.9) <b>17.3 (7.8)</b>
20' (6.1 m)	*29.2 (*13.2) <b>*33.6 (*15.2)</b>	*29.2 (*13.2) <b>*33.6 (*15.2)</b>	*27.5 (*12.5) <b>*31.6 (*14.3)</b>	22.3 (10.1) <b>29.8 (13.5)</b>	22.2 (10.1) <b>*27.7 (*12.6)</b>	16.3 (7.4) <b>21.7 (9.8)</b>	16.9 (7.7) <b>22.6 (10.3)</b>	12.3 (5.6) <b>16.4 (7.4)</b>
10' (3.0 m)	*33.8 (*15.3) <b>*38.9 (*17.6)</b>	29.8 (13.5) <b>*38.9 (*17.6)</b>	28.9 (13.1) <b>*35.4 (*16.1)</b>	21.0 (9.5) <b>28.0 (12.7)</b>	21.5 (9.8) <b>28.6 (13.0)</b>	15.6 (7.1) <b>20.8 (9.4)</b>	17.1 (7.8) <b>22.8 (10.3)</b>	12.5 (5.7) <b>16.9 (7.7)</b>
0'	38.8 (17.6) <b>*46.6 (*21.1)</b>	27.3 (12.4) <b>36.4 (16.5)</b>	27.5 (12.5) <b>36.3 (16.5)</b>	19.7 (8.9) <b>26.3 (11.9)</b>	20.9 (9.5) <b>27.8 (12.6)</b>	15.1 (6.8) <b>20.0 (9.1)</b>	16.5 (7.5) <b>22.0 (10.0)</b>	11.9 (5.4) <b>15.8 (7.2)</b>

- Notes:
1. Ratings are based on SAE J2417
  2. Capacity ratings do not exceed 75% of tipping load with the machine on firm, level ground or 87% of hydraulic capacity
  3. Ratings are in 1000's of lbs. (kg) and do not include grapple
  4. "\*" indicates loads limited by hydraulic capacity
  5. Ratings in **bold** indicate corresponding 100% values.



# Forester



# Forester Features

## Fronts

- Forester models feature all-Hitachi cylinders which are top quality and dependable
- Hitachi fronts include: heeler, excavator front, butt-n-top
- Available cylinder guards, boom and cylinder mounted - to protect cylinders and plumbing
- Optional high lift kits pin onto Forester main frame for excavator fronts
- Plumbing options for grapples, thumbs, processing heads, stroke delimbers and other tools (factory designed/built)

## Attachments

- Grapples
- Grapples with rotators
- Stroke delimbers
- Processing heads
- Harvesting heads
- Heel-Type Loader
- Butt-n-Top Loader

## Hydraulics

- Outstanding Hitachi hydraulics provide the smoothest multi-function operations available
- Dedicated hydraulics for rotator functions

## Undercarriage

- Double pedestal, heavy-duty top rollers standard with high-wide undercarriage
- Extreme duty travel motor guards for ultimate protection
- Wider gauge (optional) for greater stability
- Ski-type full length rock guard: optional
- Track guides: standard
- High-wide undercarriage: optional

## Upperstructure

- Forester main frame reinforcement - factory designed and built for the heavier applications demands of logging
- Thick plate (9 mm) underhouse guarding designed into machine - not added on
- Extra strength cab deck area to accommodate the standard and rear entry cabs and various risers
- Counterweights are Forester Series - heavier capacity
- Thick plate (6 mm) side doors on left and right for greater protection
- Optional log deflector on right side
- Forestry engine cover minimizes debris entry
- Tool box and fuel tank guarding: optional

## Cab/Operator's Compartment

- Side entry and rear entry cabs
- 8 silicone isolation mounts to reduce vibration and noise (side entry cabs only)
- Cabs designed and built to either OSHA or WCB regulations
- Excellent visibility and operational safety with forward and side windows to produce greater productivity
- Rear entry cab has added floor window for increased visibility
- Purpose-designed and built to maximize ergonomic benefits, comfort, ease of operation
- 12-volt power outlets
- Air horn for rear entry cab: optional
- Hydraulic tilt for cab transport: optional

## Riser Options

### Side-entry cabs:

- No riser
- 12-in. (305 mm) fixed riser
- 18-in. (457 mm) fixed riser
- 48-in. (1 219 mm) tilting riser
- 72-in. (1 829 mm) tilting riser

### Rear-entry cabs:

- 48-in. (1 219 mm) tilting riser
- 72-in. (1 829 mm) tilting riser

## Options

- Guarding packages
- Lights (working)
- Plumbing packages
- Counterweight-mounted fuel tank
- Many more

## Service/Warranties

- Tilt-out oil cooler for excellent serviceability (optional)
- Easy access to all major drive/power components/systems
- Warranty: 6 months/1500 hours total machine
- PM needs are often half of other competitive brands

## Electrical

- Extra protection for high rainfall and salt water barging
- In-cab transformer for converting 24v to 12v standard
- Standard Hitachi electronic/computerized chip controls used, but totally re-wired for the purpose-built cab to ensure factory incorporation of additional control features and dependability in extreme logging applications

## Miscellaneous

- Hitachi Forester designed from the "ground up" as purpose-built logging/forestry machine
- Designed to maximize operator safety based on ISO and SAE suggested guidelines



Hitachi Construction Machinery (America) Corp.  
20411 Imperial Valley Dr., Houston, Texas 77073  
Phone: 281-821-2400 Fax: 281-821-0981

Hitachi Construction Machinery Canada, Ltd.  
2684 Drew Road, Mississauga, Ontario L4T 3C4  
Phone: 905-673-0661 Fax: 905-673-0854